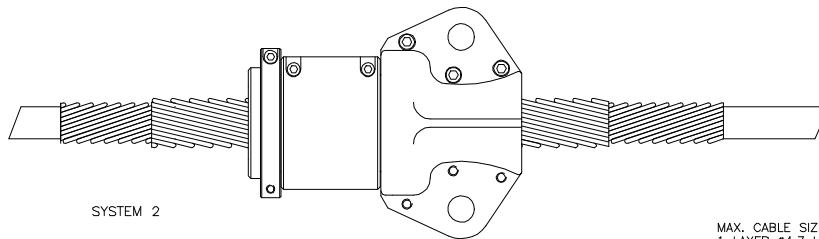


SYSTEM 1



SYSTEM 2

MAX. CABLE SIZE $\phi 58$
 1 LAYER $\phi 4.7$ HELICAL LOAD WIRES
 1 LAYER $\phi 4.7$ HELICAL STIFFENING WIRES
 CABLE LOAD >45370kg (100000lbs)

SYSTEM 1 WEIGHT 44kg (97lbs) IN WATER
 SYSTEM 2 WEIGHT 30kg (66lbs) IN WATER

DATE 24Jul'97				CWA DESIGN COPYRIGHT NOT TO BE USED OR RE- PRODUCED WITHOUT EXPRESS PERMISSION FROM CWA	TOLERANCES :- UNLESS OTHERWISE STATED NO DEC PLACE ± 0.5 ANGULAR $\pm 1/4^\circ$ 1 DEC PLACE ± 0.3 2 DEC PLACE ± 0.15 HOLES UP TO 12.7mm $+0.10\text{mm} -0$ ALL COAXIAL DIAS CONCENTRIC WITHIN 0.05mm ALL HOLES ON PITCH CIRCLES WITHIN 0.10mm OF TRUE POS.	REMOVE ALL SHARP EDGES WITH 0.40 RAD OR CHAMFER UNLESS OTHERWISE STATED	MATERIAL	FINISH	SURFACE FINISH D.B. UNLESS OTHERWISE STATED
DRAWN fjj			AS COMPONENT				NATURAL		
SCALE NTS	24Jul'97	1					DRWG No. 50-3039-00		
CHECKED	DATE	C.NOTE	ISS	CWA PRODUCTS LIMITED HOOK BASINGSTOKE HANTS			TITLE	SWIVEL TOW SYSTEM ALTERNATIVES	