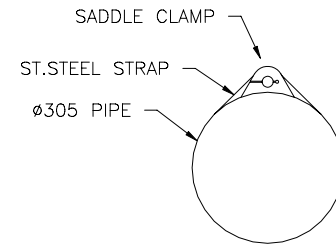
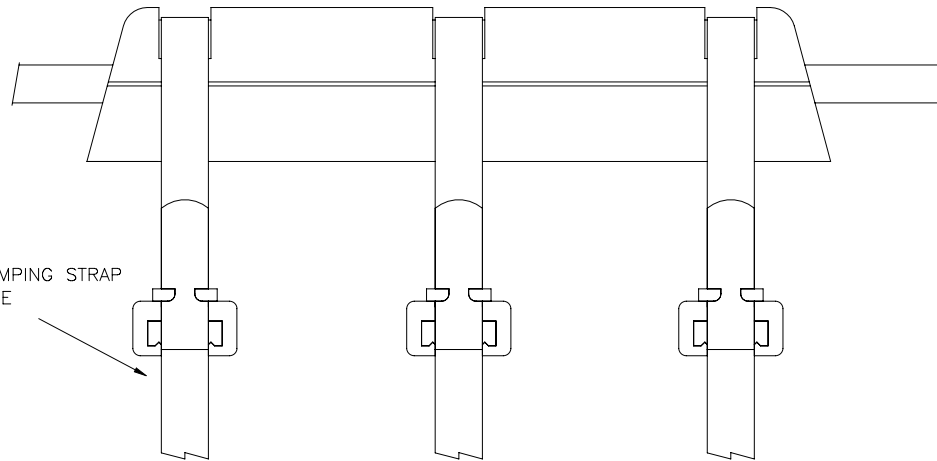
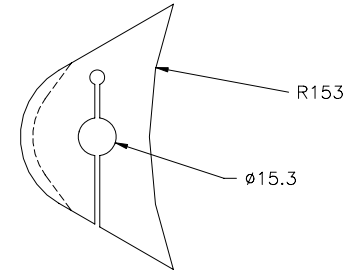
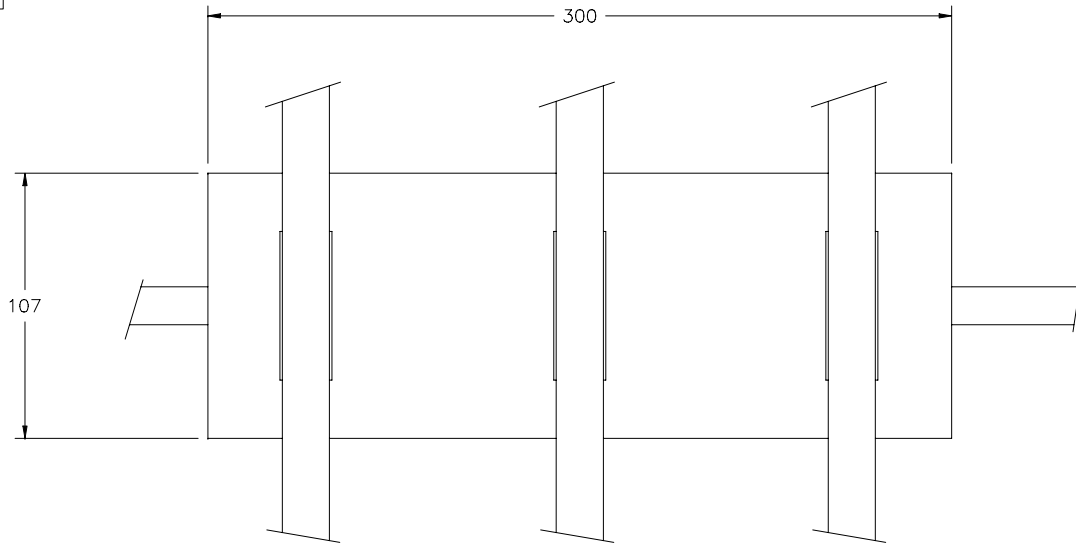


DRWG No  
10-3122

THIRD ANGLE PROJECTION. DIMNS. IN MM



316 STAINLESS STEEL CLAMPING STRAP  
LENGTH TO SUIT Ø305 PIPE  
PLUS SADDLE CLAMP

DATE	10Jul'02		
DRAWN	fjj		
SCALE	NTS		
CHECKED	10Jul'02		1
	DATE	C.NOTE	ISS

CWA DESIGN COPYRIGHT  
NOT TO BE USED OR RE-  
PRODUCED WITHOUT EXPRESS  
PERMISSION FROM CWA

TOLERANCES :- UNLESS OTHERWISE STATED  
NO DEC PLACE ±0.5 ANGULAR ±1/4°  
1 DEC PLACE ± 0.3 2 DEC PLACE ±0.15  
HOLES UP TO 12.7mm +0.10mm -0  
ALL COAXIAL DIAS CONCENTRIC WITHIN 0.05mm  
ALL HOLES ON PITCH CIRCLES WITHIN 0.10mm OF TRUE POS.

REMOVE ALL SHARP  
EDGES WITH 0.40 RAD  
OR CHAMFER UNLESS  
OTHERWISE STATED

MATERIAL  
CWA100 POLYURETHANE

FINISH  
DRWG No.  
10-3122

SURFACE  
FINISH  
0.8  
UNLESS  
OTHERWISE  
STATED

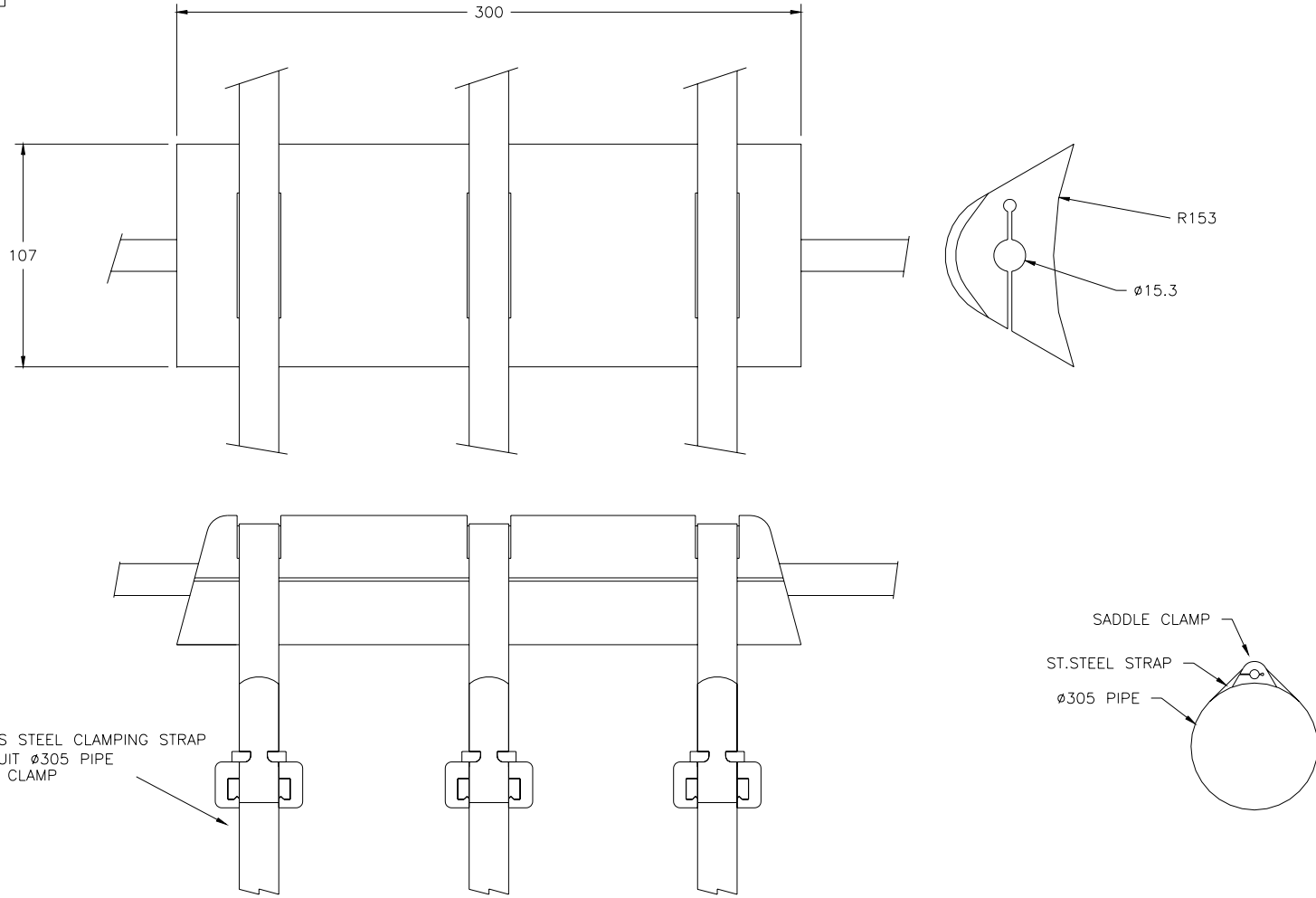
**CWA PRODUCTS LIMITED HOOK BASINGSTOKE HANTS**

TITLE  
Ø305/Ø15.3 SADDLE

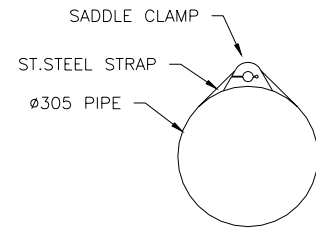
DRWG No

10-3122

THIRD ANGLE PROJECTION. DIMNS. IN MM



316 STAINLESS STEEL CLAMPING STRAP  
LENGTH TO SUIT Ø305 PIPE  
PLUS SADDLE CLAMP



DATE 10Jul'02				CWA DESIGN COPYRIGHT NOT TO BE USED OR RE- PRODUCED WITHOUT EXPRESS PERMISSION FROM CWA	TOLERANCES :- UNLESS OTHERWISE STATED NO DEC PLACE :0.5 ANGULAR ±1/2° 1 DEC PLACE : 0.3 2 DEC PLACE :0.15 HOLES UP TO 12.7mm +0.10mm -0 ALL COAXIAL DIAS CONCENTRIC WITHIN 0.05mm ALL HOLES ON PITCH CIRCLES WITHIN 0.10mm OF TRUE POS.	REMOVE ALL SHARP EDGES WITH 0.40 RAD OR CHAMFER UNLESS OTHERWISE STATED	MATERIAL CWA100 POLYURETHANE	FINISH	SURFACE FINISH 0.8 UNLESS OTHERWISE STATED		
DRAWN fjj										DRWG No. 10-3122	
SCALE NTS	10Jul'02		1								
CHECKED	DATE	C.NOTE	ISS				CWA PRODUCTS LIMITED HOOK BASINGSTOKE HANTS			TITLE Ø305/Ø15.3 SADDLE	