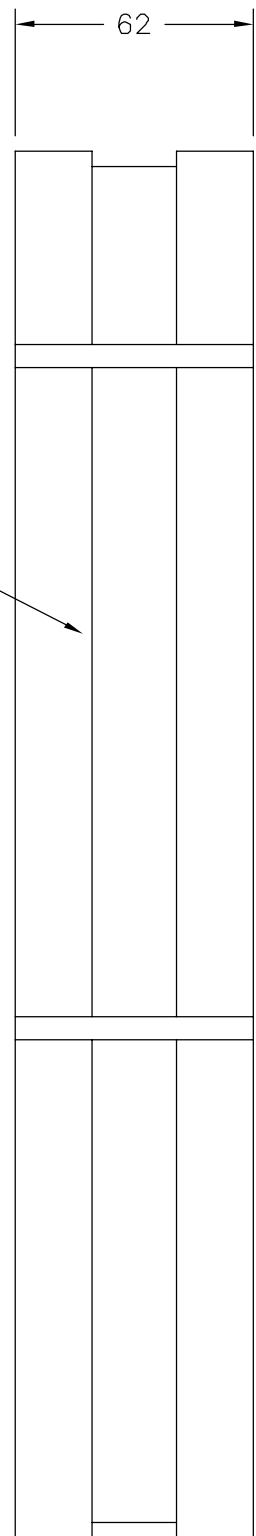


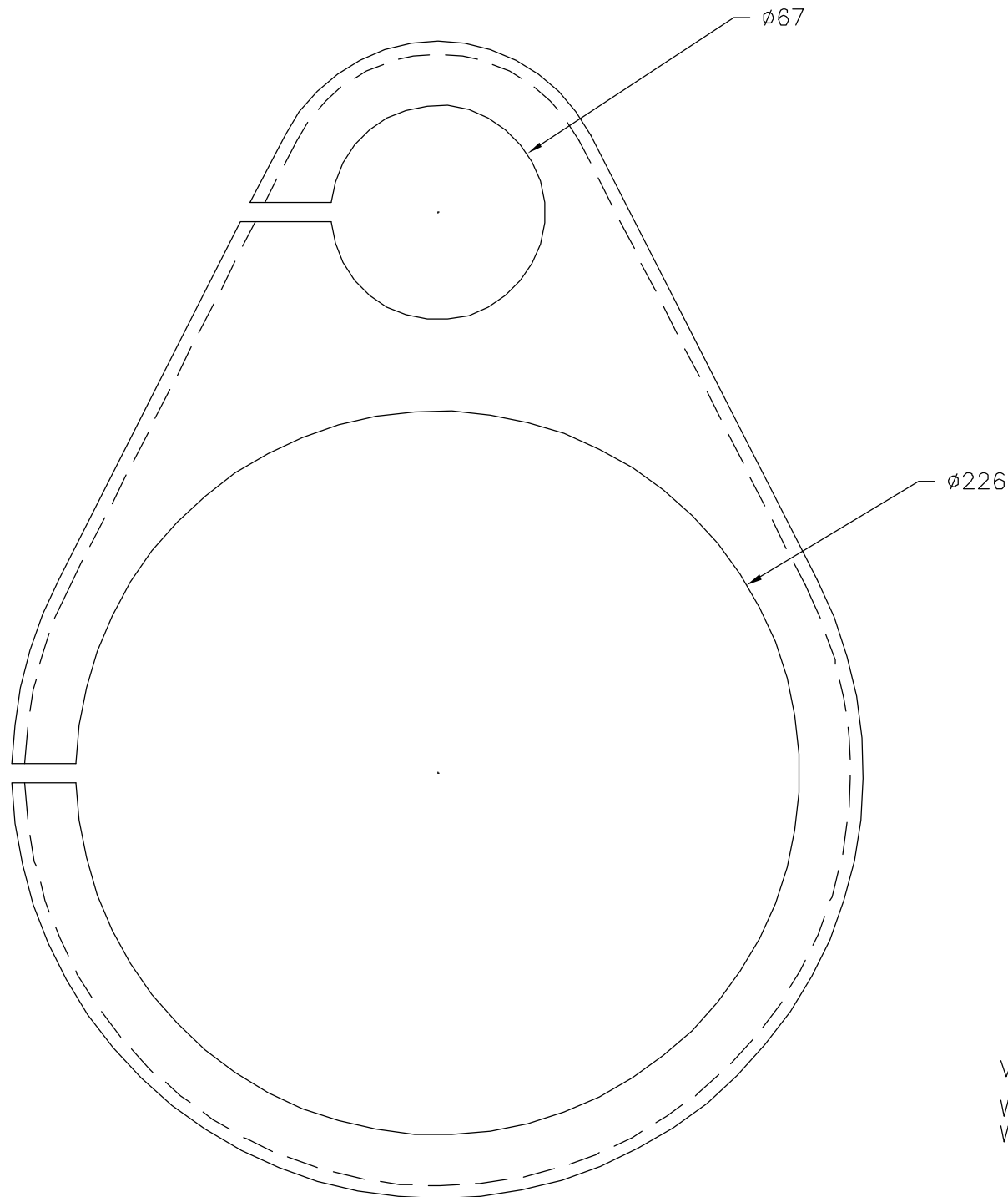
DRWG No  
10-2900

THIRD ANGLE PROJECTION. DIMNS. IN MM



LOCATION GROOVE FOR  
19mm STRAPPING

STRAPPING MATERIAL:  
INCONEL OR SUPERDUPLEX



VOL = 1531cm<sup>3</sup>  
WEIGHT IN AIR 1685gm  
WEIGHT IN WATER 154gm

DATE 6Sept'99				<p>CWA DESIGN COPYRIGHT NOT TO BE USED OR RE- PRODUCED WITHOUT EXPRESS PERMISSION FROM CWA</p> <p><b>CWA PRODUCTS LIMITED HOOK BASINGSTOKE HANTS</b></p>	<p>TOLERANCES :- UNLESS OTHERWISE STATED NO DEC PLACE ±0.5 ANGULAR ±¼° 1 DEC PLACE ± 0.3 2 DEC PLACE ±0.15 HOLES UP TO 12.7mm +0.10mm -0 ALL COAXIAL DIAS CONCENTRIC WITHIN 0.05mm ALL HOLES ON PITCH CIRCLES WITHIN 0.10mm OF TRUE POS.</p>	<p>REMOVE ALL SHARP EDGES WITH 0.40 RAD OR CHAMFER UNLESS OTHERWISE STATED</p>	MATERIAL	FINISH	<p>SURFACE FINISH 0.8 UNLESS OTHERWISE STATED</p>
DRAWN fjj							CWA100 POLYURETHANE	DRWG No.	
SCALE NTS	6Sept'99		1				10-2900	TITLE	
CHECKED	DATE	C.NOTE	ISS				CABLE SADDLE		